



- » Background and Contact Information
- » FAQs
- » Meet the Energy Surveyors
- » Return to [neea.org](http://neea.org)

Learn how you can make a difference to the Northwest's energy future!



## BACKGROUND AND CONTACT INFORMATION

The Northwest Energy Efficiency Alliance (NEEA), supported by the region's electric utilities, is conducting a comprehensive research study of energy efficiency in Pacific Northwest residential buildings – officially called Residential Building Stock Assessment (RBSA). This study will inform future Pacific Northwest energy planning efforts. Study results will be used to identify energy efficiency utility programs and rebates offered by the region's utilities, the Energy Trust of Oregon and the Bonneville Power Administration.

NEEA initially contacted potential participants for this study in April and May 2011 with a short phone survey. In some areas, phone survey calls may extend through July 2011. The phone survey collected basic information on energy use and appliances. A subset of eligible homes identified in the phone survey will be called between June and December 2011 to schedule onsite home energy use surveys and, in some cases, more in-depth energy reviews of the homes. Over 1,700 homes within the Northwest will be visited.

Questions?

Call toll free [866-236-8978](tel:866-236-8978)

Email [energyusesurvey@neea.org](mailto:energyusesurvey@neea.org)



## GENERAL FAQs FOR PARTICIPANTS

- » Background and Contact Information
- » FAQs
- » Meet the Energy Surveyors
- » Return to [neea.org](http://neea.org)

### Who do I call if I have questions?

Ecos is working on behalf of NEEA to implement the onsite home energy use survey phase of this research study. Contact Ecos toll free at 866-236-8978 or [energyusesurvey@neea.org](mailto:energyusesurvey@neea.org).

### Can I speak with someone at NEEA?

If Ecos is not able to satisfactorily answer your question, let them know and they will put you in touch with NEEA.

### How can I get more information about NEEA?

For more information about NEEA, go to NEEA's website at [www.neea.org](http://www.neea.org).

### What is Residential Building Stock Assessment (RBSA)?

Residential Building Stock Assessment (RBSA) is the official name of this research study that will inform future Pacific Northwest energy planning efforts. Study results will be used to identify energy efficiency utility programs and rebates offered by the region's utilities, the Energy Trust of Oregon and the Bonneville Power Administration.

### How is my utility involved in this study?

NEEA is conducting this study on behalf of more than one hundred utilities throughout the Pacific Northwest region, including Oregon, Washington, Idaho, and parts of Montana.

### How will the study information be used?

The study results will help inform future Pacific Northwest energy planning efforts. The study results also will be used to design energy efficiency rebate programs to help the Pacific Northwest meet increasing residential energy needs through energy efficiency.

### Who will have access to the study information?

Only entities working on behalf of NEEA to complete the research study will have access to the study information. The final report will be available to utilities, power planning entities, and others interested in energy planning in the Northwest. The final report will also be available on NEEA's website and can be accessed by the general public.

### How did you get my contact information?

Potential participants for the survey are selected at random from all households in Washington, Oregon, Idaho, and parts of Montana with a telephone or individuals with a cell phone. By selecting participants randomly, we will be able to represent what the whole population of this region looks like. It's important to participate so that we have an accurate picture of households in these areas.



## GENERAL FAQs FOR PARTICIPANTS

- » Background and Contact Information
- » FAQs
- » Meet the Energy Surveyors
- » Return to neea.org

### Will my information be kept confidential?

All participant responses will be kept confidential and used strictly for research purposes. All personal information will be stripped from the data. Your information will be grouped and analyzed with that of many other residents across the region.

### Will my information be used for anything else?

Any information collected will be used for the purposes of this research study only.

### How long will the interview with the Energy Surveyor take during the in home energy use survey and what kinds of questions are you asking?

The interview takes around 10-15 minutes to complete, depending on your responses to the questionnaire. The interview includes questions about characteristics of your household, your energy use and appliances at your primary residence, along with some simple demographic information.

### How long will the onsite home energy use survey take?

The survey takes about 3 hours. It may take less or more depending on the size of your home.

### What information will the Energy Surveyor gather when they are at my home conducting the onsite home energy use survey?

When the Energy Surveyor is in your home, she/he will conduct a walkthrough of your entire home to gather data about lighting, appliances, insulation and other home features. In some homes, the energy surveyor may perform diagnostic testing, if you gave permission to do so.

### Will I get a report about my home?

Because this is a research survey as opposed to an energy audit, individual home reports will not be available. The data is being used only in summary with other homes to help determine regional policy and programs.

### Can I go around with the Energy Surveyor and see what they are looking at?

You may observe the energy surveyor, but please keep in mind that the Energy Surveyor is trained to collect data efficiently. They cannot offer interpretations of your home's conditions. If you have questions about energy efficiency, you might consider consulting your local utility for information and/or resources in your area.



## GENERAL FAQs FOR PARTICIPANTS

- » [Background and Contact Information](#)
- » [FAQs](#)
- » [Meet the Energy Surveyors](#)
- » [Return to neea.org](#)

### **Is there an incentive for completing the onsite home energy use survey?**

There is a monetary incentive (paid by check from Ecos) for completing the onsite home energy use survey. There was not an incentive for completing the phone survey.

### **When will I receive the incentive for completing the onsite home energy use survey?**

When a survey is considered complete, you will receive the incentive via check from Ecos. A complete survey includes an interview, a signed billing history release authorization form, and a home walk through.

### **What is Ecos?**

Ecos is the company working on behalf of NEEA to conduct the onsite home energy use surveys.

### **What is ORC International?**

ORC International is the company working on behalf of NEEA to conduct the phone surveys.

### **How can I identify the Energy Surveyor coming to my home?**

You can view pictures of all our Energy Surveyors by clicking on the "Meet the Energy Surveyors" link at the top of this page.

### **What is the additional diagnostic testing?**

A percentage of all participant homes will receive blower door, duct blast, and true flow diagnostic tests. Not all homes are eligible for these tests, which measure the air tightness, duct system tightness, and total flow of forced air system air handler within the home.



- » Background and Contact Information
- » FAQs
- » Meet the Energy Surveyors
- » Return to [neea.org](http://neea.org)

## MEET THE ENERGY SURVEYORS



**Josh Miller**  
Straight Arrow Energy Efficiency/  
Ecos



**Ben Albers**  
Straight Arrow Energy Efficiency/  
Ecos



**Zach Erdman**  
Premium Efficiency/Ecos



**Sean Williamson**  
Premium Efficiency/Ecos



**Eric Falk**  
Premium Efficiency/Ecos



- » Background and Contact Information
- » FAQs
- » Meet the Energy Surveyors
- » Return to [neea.org](http://neea.org)

## MEET THE ENERGY SURVEYORS



**Joe Rimbeck**  
Premium Efficiency/Ecos



**Michael Boutette**  
Premium Efficiency/Ecos



**Jason Hellum**  
Energetechs/Ecos



**Matt DeLong**  
Energetechs/Ecos



**Andy Lemann**  
EnergetechsEcos



- » Background and Contact Information
- » FAQs
- » Meet the Energy Surveyors
- » Return to neea.org

## MEET THE ENERGY SURVEYORS



**Eric Elliott**  
Build with Vision/Ecos



**Tad Duby**  
Build with Vision/Ecos



**Alex Elliott**  
Build with Vision/Ecos



**Bryce Cohan**  
Balanced Energy Solutions/Ecos



**Justin Hiatt**  
Balanced Energy Solutions/Ecos

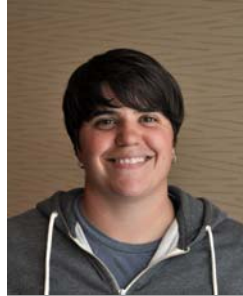


- » Background and Contact Information
- » FAQs
- » Meet the Energy Surveyors
- » Return to neea.org

**MEET THE ENERGY  
SURVEYORS**



**Adam Wagner**  
Balanced Energy Solutions/Ecos



**Tausha Sheff**  
Balanced Energy Solutions/Ecos



**Aleta Mills**  
Balanced Energy Solutions/Ecos



**Nick York**  
Balanced Energy Solutions/Ecos



**Don LaCourse**  
HomeRX/Ecos



- » Background and Contact Information
- » FAQs
- » Meet the Energy Surveyors
- » Return to [neea.org](http://neea.org)

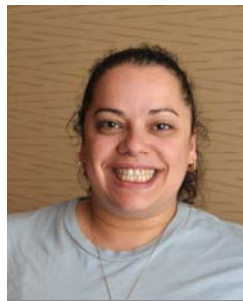
## MEET THE ENERGY SURVEYORS



**Marco Mazzone**  
HomeRX/Ecos



**Rose Mesec**  
HomeRX/Ecos



**Maritza Pacheco**  
HomeRX/Ecos



**Anthony Cutler**  
HomeRX/Ecos



**Paul Pfister**  
HomeRX/Ecos



- » Background and Contact Information
- » FAQs
- » Meet the Energy Surveyors
- » Return to [neea.org](http://neea.org)

**MEET THE ENERGY  
SURVEYORS**



**Mark French**  
HomeRX/Ecos



**Bruce Manclark**  
Delta-T/Ecos



**Michael Budds**  
Ecos



**Lowell Chandler**  
Energetechs/Ecos