



RBSA 2022 Webinar #6

Mike Psaris
Senior Program Manager, Northwest Energy Efficiency Alliance

Ben Spearing
Senior Program Coordinator, Northwest Energy Efficiency Alliance

Kevin Price
Principal Consultant, Evergreen Economics

10/25/2022



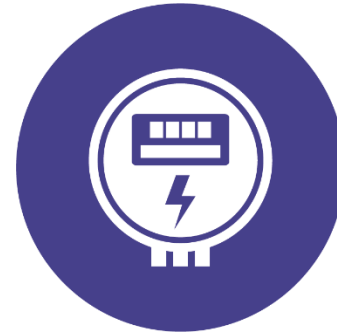
Agenda



Background



Recruiting and
Site Visit
Updates



Billing Data
Requests



Resources &
Questions



Background



NEEA's Business Plan: Stock Assessments



Single-family



Multi-family



“This will be the first cycle that natural gas funding supports the stock assessments.”



RBSA Workgroup

Purpose: The Residential Building Stock Assessment (RBSA) Work Group will provide NEEA with decision support and coordination on key components of the study's design and implementation.

- Avista
- Bonneville Power Administration
- Cascade Natural Gas
- Clark PUD
- Energy Trust of Oregon
- Idaho Power
- Northwest Natural Gas
- Northwest Power and Conservation Council
- Puget Sound Energy
- Regional Technical Forum
- Seattle City Light
- Snohomish County PUD

Residential Building Stock Assessment (RBSA)

Vision Statement:

“Support the region's energy efficiency, resource planning, and utility objectives through a regionally representative, statistically rigorous, and comprehensive assessment of residential buildings.”



Recruiting and Site Visit Updates



Recruiting and Site Visits Overview

High Level Updates:

1. Single-family site visits are *nearly* all scheduled or complete!
2. Multi-family recruitment is challenging, but we are leveraging outside sources to update contact information and are leveraging existing contacts to provide referrals



RBSA 2022 Site Visits

Completed work (as of 10/21):

- 1,840 of 1,910 single-family sites complete
- Most of the remaining 50 sites are scheduled
- 105 multi-family property surveys with up to 10 more in the scheduling process for November



RBSA 2022 Site Visit Data

Data Updates:

- Evergreen provided sample data to NEEA and the Workgroup for review
- Reviewers provided detailed feedback on the variables and data structure
- Evergreen, NEEA, and the Workgroup are also developing a plan for summary Excel files that will be structured to allow for weighted saturation analysis



RBSA Timeline - Overview

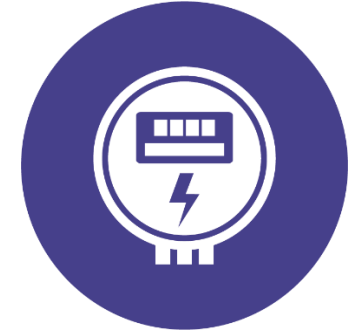
Study Component	2021				2022				2023	
	Q1	Q2	Q3	Q4	Q1	Q2	Q3	Q4	Q1	Q2
Study Design and Planning	█	█								
Systems and Resources Development and Testing	█	█	█	█	█					
Recruitment and Data Collection				█	█	█	█	█	█	
Data Analysis								█	█	
Reporting and Presentations								█	█	█



Billing Data Requests



Utility Billing Data



Why do we need billing data?

1. To better understand heating and cooling loads of HVAC equipment in the Northwest
2. Links usage to building stock characteristics to inform how equipment holdings / building attributes relate to load

How will we get the data?

- Engaging with study funders and BPA EERs and BPA utilities to identify key personnel and key steps
- Work jointly with utility contacts to facilitate data transfer

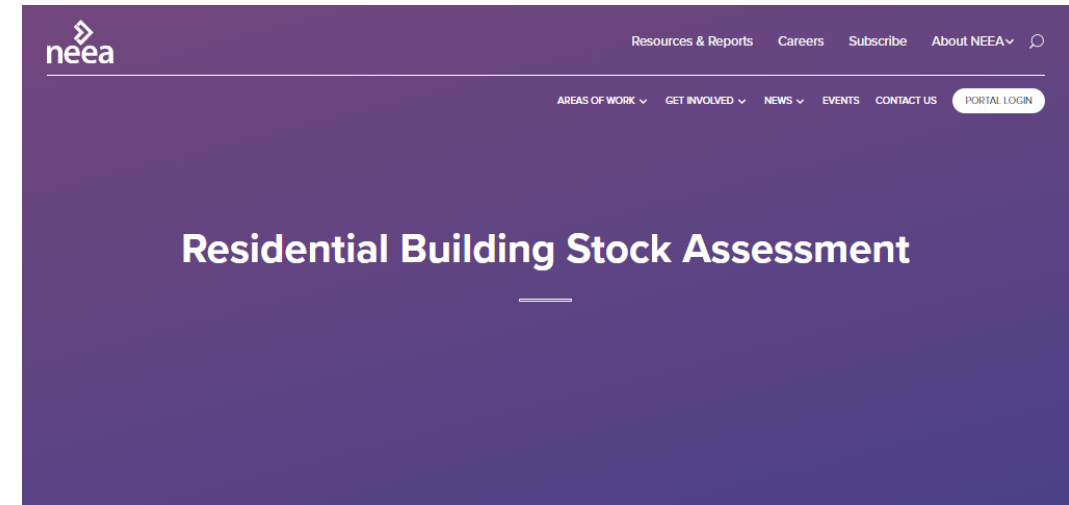
A large, faint, light blue geometric logo consisting of several overlapping, nested shapes that resemble a stylized 'S' or a series of interlocking lines, centered in the background of the slide.

Resources/Questions



RBSA Info

1. Webinars: Quarterly
2. RBSA FAQ: Will be on neea.org/RBSA and delivered to utilities prior to recruitment in their service territory.
3. List serve: neea.org/subscribe
 1. Building Stock Assessments



[< Back to Regional Data Resources](#)

NEEA is planning the next RBSA! We anticipate conducting field work from July 2021 to June 2022 and publishing final datasets and reports by Q1 2023. This timeline is subject to change as we monitor and adapt to the COVID-19 pandemic.

The RBSA is designed to develop a characterization of the residential sector that considers the diverse climates, building practices and fuel choices across the region. This study informs future energy planning efforts as well as energy efficiency utility programs and rebates offered by the region's utilities, the [Energy Trust of Oregon](#) and the [Bonneville Power Administration](#). The most recent RBSA was fielded in 2016. Those reports, database, and supporting documentation are included in the corresponding drop downs below.

Questions on the RBSA?

View our [Frequently Asked Questions](#) and supporting documentation for more info and sign up for the [Northwest Building Stock Research Data subscription list](#) to get timely RBSA updates.



NEEA Contacts

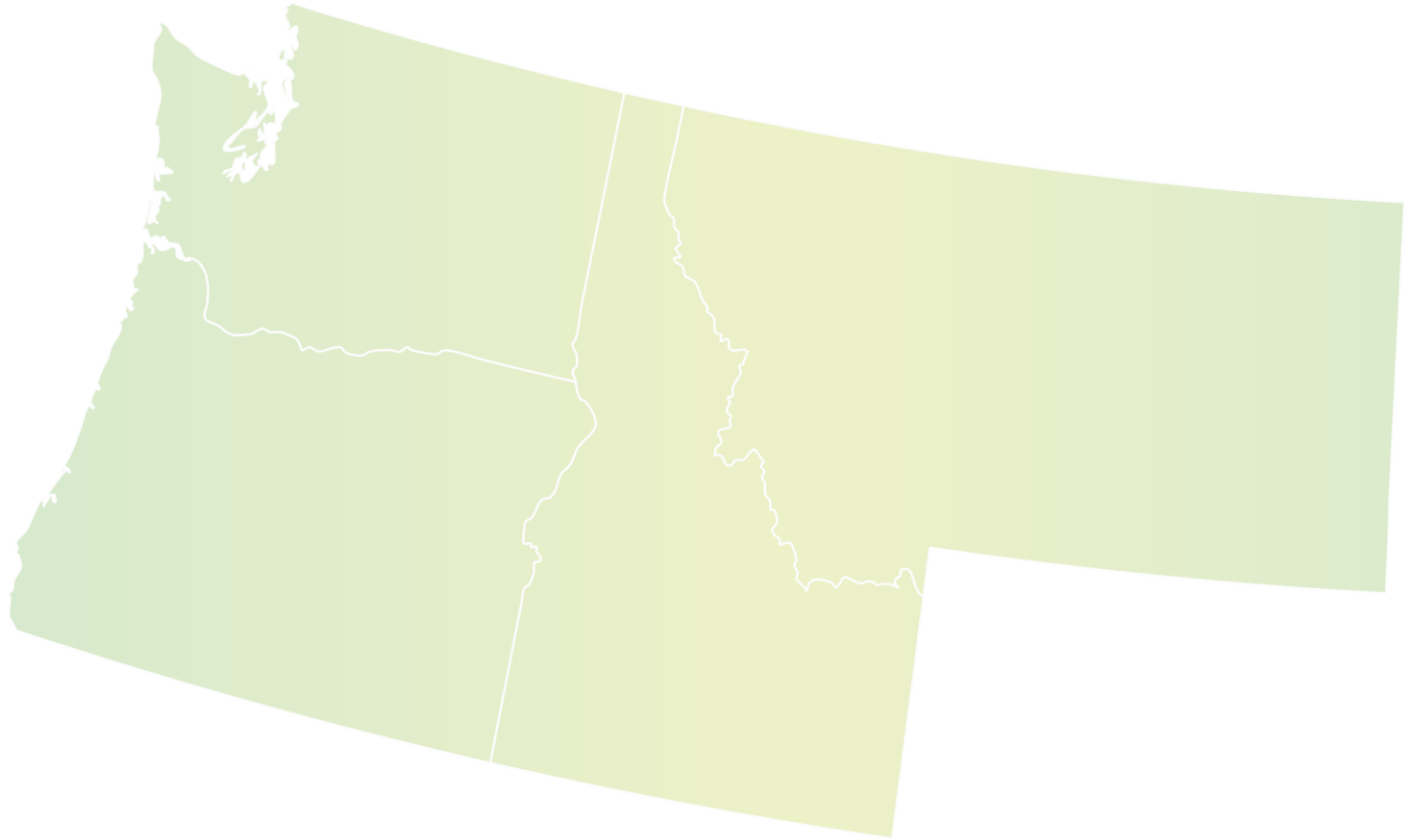


- Mike Psaris – Project Manager
 - mpsaris@neea.org
- Ben Spearing – Project Coordinator
 - bspearing@neea.org



Questions?

Thank you!





Recruitment

Recruitment Metrics (single-family):

- 3.4% overall mail-to-web survey response rate*
- 46% of web survey respondents choose to be contacted about the RBSA on-site
- An additional 16% of web survey respondents ask to be contacted later (2+ weeks) about the on-site
- Slightly less than half of soft recruited web survey respondents have participated, to-date

*this includes mailers that were sent out within the last two weeks



RBSA Timeline – Where and When?

