



# ***RBSA 2022 Webinar #5***

Mike Psaris  
Project Manager, Northwest Energy Efficiency Alliance

Ben Spearing  
Project Coordinator, Northwest Energy Efficiency Alliance

Kevin Price  
Project Manager, Evergreen Economics

07/14/2022



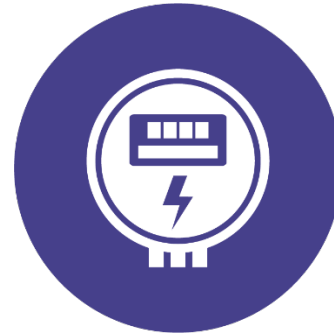
# *Agenda*



Background



Recruiting and  
Site Visit  
Updates



Billing Data  
Requests



Resources &  
Questions



# *Background*





# NEEA's Business Plan: Stock Assessments



*Single-family*



*Multi-family*

“This will be the first cycle that natural gas funding supports the stock assessments.”





# ***RBSA Workgroup***

**Purpose:** The Residential Building Stock Assessment (RBSA) Work Group will provide NEEA with decision support and coordination on key components of the study's design and implementation.

- Avista
- Bonneville Power Administration
- Cascade Natural Gas
- Clark PUD
- Energy Trust of Oregon
- Idaho Power
- Northwest Natural Gas
- Northwest Power and Conservation Council
- Puget Sound Energy
- Regional Technical Forum
- Seattle City Light
- Snohomish County PUD

# ***Residential Building Stock Assessment (RBSA)***

## **Vision Statement:**

“Support the region's energy efficiency, resource planning, and utility objectives through a regionally representative, statistically rigorous, and comprehensive assessment of residential buildings.”



# *Recruiting and Site Visit Updates*



# *Recruiting and Site Visits Overview*

## **High Level Updates:**

1. Single-family and multi-family site visits are ongoing
2. Single-family recruitment rates have stabilized (mostly)
3. Multi-family recruitment is challenging, but we are leveraging outside sources to update contact information
4. Conducting single-family recruitment across all four states (site visits in Montana start soon)
5. Developing interim data deliverables for review
6. Initiating billing data requests with utilities





## ***RBSA 2022 Site Visits – Single-Family***

### **Completed work (as of 7/8):**

- 1,007 single-family sites (including some oversample sites)
- 402 single-family sites with HVAC testing
- 118 more single-family sites currently scheduled
- 99 multi-family property surveys
- 231 multi-family tenant unit surveys



# *Recruitment*

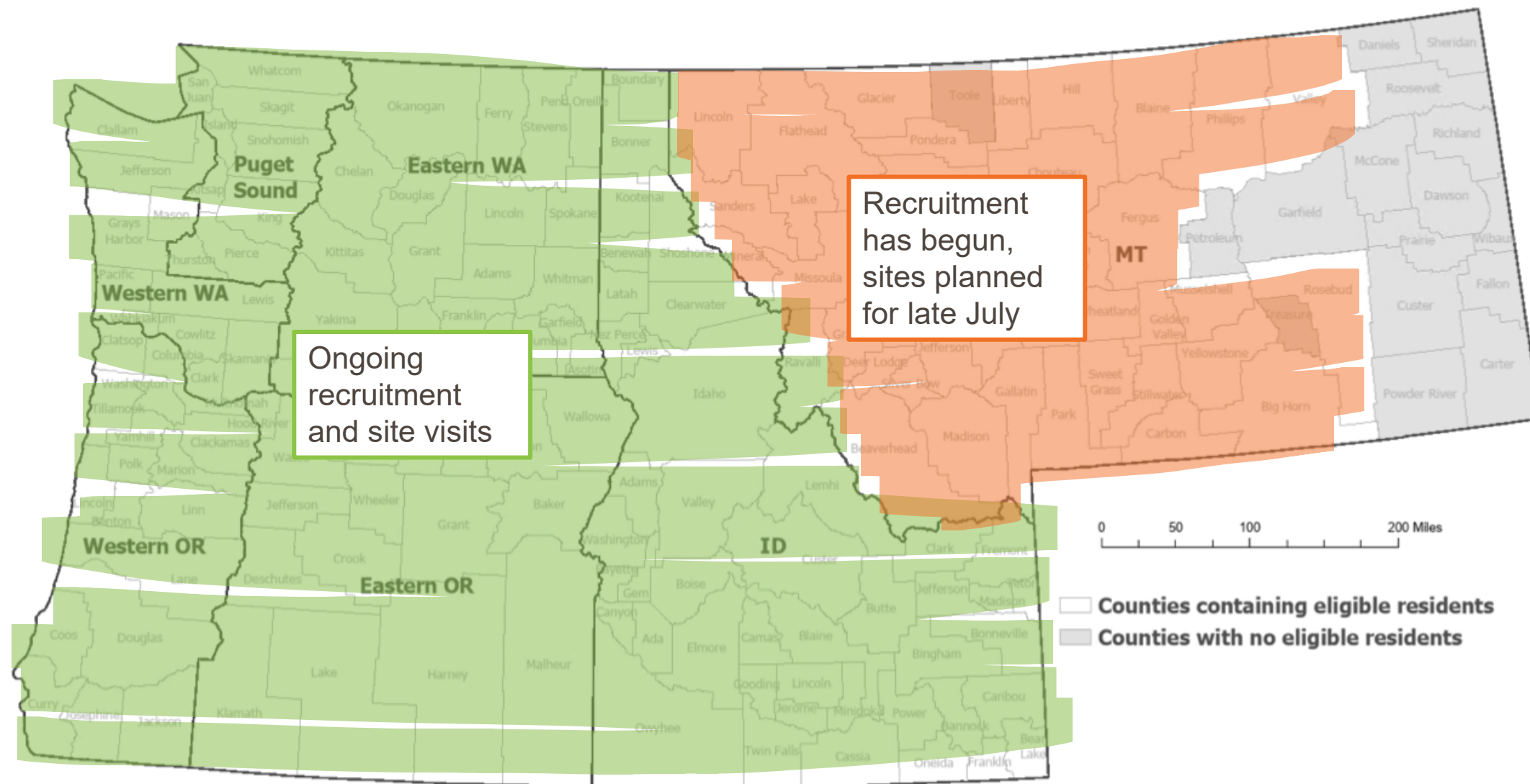
## **Recruitment Metrics (single-family):**

- 3.4% overall mail-to-web survey response rate\*
- 46% of web survey respondents choose to be contacted about the RBSA on-site
- An additional 16% of web survey respondents ask to be contacted later (2+ weeks) about the on-site
- Slightly less than half of soft recruited web survey respondents have participated, to-date

\*this includes mailers that were sent out within the last two weeks



# RBSA Timeline – Where and When?





## ***RBSA Timeline - Overview***

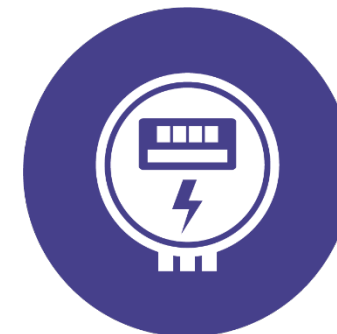
Study Component	2021				2022				2023
	Q1	Q2	Q3	Q4	Q1	Q2	Q3	Q4	Q1
Study Design and Planning									
Systems and Resources Development and Testing									
Recruitment and Data Collection									
Data Analysis									
Reporting and Presentations									



# *Billing Data Requests*



# *Utility Billing Data*



## **Why do we need billing data?**

1. To better understand heating and cooling loads of HVAC equipment in the Northwest
2. Links usage to building stock characteristics to inform how equipment holdings / building attributes relate to load

## **How will we get the data?**

- Engaging with study funders and BPA EERs and BPA utilities to identify key personnel and key steps
- Work jointly with utility contacts to facilitate data transfer





# *Resources/Questions*



# RBSA Info

1. **RBSA FAQ:** Will be on [neea.org/RBSA](https://neea.org/RBSA) and delivered to utilities prior to recruitment in their service territory.
2. **List serve:** [neea.org/subscribe](https://neea.org/subscribe)
  1. Building Stock Assessments
3. **Webinars:** Quarterly

The screenshot shows the NEEA website header with navigation links: Resources & Reports, Careers, Subscribe, About NEEA, and a search icon. Below the header is a secondary navigation bar with links: AREAS OF WORK, GET INVOLVED, NEWS, EVENTS, CONTACT US, and a PORTAL LOGIN button. The main heading of the page is "Residential Building Stock Assessment". Below this heading, there is a link "< Back to Regional Data Resources". The main text states: "NEEA is planning the next RBSA! We anticipate conducting field work from July 2021 to June 2022 and publishing final datasets and reports by Q1 2023. This timeline is subject to change as we monitor and adapt to the COVID-19 pandemic." Below this text, a paragraph describes the RBSA's purpose: "The RBSA is designed to develop a characterization of the residential sector that considers the diverse climates, building practices and fuel choices across the region. This study informs future energy planning efforts as well as energy efficiency utility programs and rebates offered by the region's utilities, the Energy Trust of Oregon and the Bonneville Power Administration. The most recent RBSA was fielded in 2016. Those reports, database, and supporting documentation are included in the corresponding drop downs below." On the right side of the page, under the heading "Questions on the RBSA?", there is a link to "Frequently Asked Questions" and a link to "Northwest Building Stock Research Data subscription list" to get timely RBSA updates.



## NEEA Contacts



- Mike Psaris – Project Manager
  - [mpsaris@neea.org](mailto:mpsaris@neea.org)
- Ben Spearing – Project Coordinator
  - [bspearing@neea.org](mailto:bspearing@neea.org)

Questions?



# Thank you

